

create a better place



Marine Monitoring Officer 2

Candidate Information Pack

Please consider the environment and only print this document if you really need to.

<http://www.gov.uk/environment-agency>



Job title: Marine Monitoring Officer 2
Job location: Exeter
Date: 22nd May 2018
Reference: 8195

Contents

1. Our organisation
2. Salary and benefits
3. The role
4. Further information
5. How to apply





1. Our organisation

Our organisation

We are the Environment Agency. We protect and improve the environment. Acting to reduce the impacts of a changing climate on people and wildlife is at the heart of everything we do. We reduce the risks to people, properties and businesses from flooding and coastal erosion. We protect and improve the quality of water, making sure there is enough for people, businesses, agriculture and the environment. Our work helps to ensure people can enjoy the water environment through angling and navigation. We look after land quality, promote sustainable land management and help protect and enhance wildlife habitats. And we work closely with businesses to help them comply with environmental regulations. We can't do this alone. We work with government, local councils, businesses, civil society groups and communities to make our environment a better place for people and wildlife.

Of course, none of this will be possible without the professionalism and dedication of our staff. We are committed to promoting equality and diversity in all we do, and to valuing the diversity of our workforce, customers and communities.

We're committed to helping our people to find new ways of working and to maintain our focus on creating a better place for people and wildlife. For more information on the Environment Agency and what we do, please visit:

www.environment-agency.gov.uk/aboutus

[Website](#) | [Twitter](#) | [Facebook](#) | [LinkedIn](#) | [Instagram](#) | [Flickr](#) | [YouTube](#)



2. Salary and benefits

Join us in this role and you will enjoy the following benefits:

Grade Rate: £22,433

Location: Manley House, Kestrel Way, Exeter EX2 7LQ

Hours of work: 37 hours FTE, Permanent

Leave entitlement: Your leave allowance in this role will be 25 days plus bank holidays (pro-rata - if part time or an assignment).

We offer up to two days paid environmental outcome days each year. These give you the opportunity to take part in community activities with a clear environmental outcome for people and wildlife.

Pension: We will enrol you into the Environment Agency Pension Fund (EAPF) on commencing employment, if your employment contract is for 3 months or more. The EAPF is part of the Local Government Pension Scheme (LGPS). It is a career average scheme, which means you will build up benefits based on your pay each scheme year rather than your final salary.

We will base your pension contributions on your actual pay and you will receive tax and national insurance relief on your contributions. The pension contribution rates currently range between 5.5% to 12.5%. Whilst you are in the scheme we will also pay an employer contribution into your pension pot. We currently pay 18.5%, so this is a very generous scheme.



2. Salary and benefits continued

Work/life balance:

We support flexible working hours and practices to help you strike a good balance between your work life and your personal life. We will also encourage you to keep developing your skills and professional knowledge throughout your career.

Diversity:

We are committed to diversity and inclusion. We aspire to be the best employer in the country for equality, diversity and inclusion (EDI) and want all our staff to feel valued and respected and to see this as a great place to work. From our EDI executive champions to our EDI employee networks, everyone has a part to play to embed equality, diversity and inclusion in our organisation. Diversity: it's in our nature.



3. The role

Role

Carry out marine monitoring (sampling and data collection) and post survey data processing to support the marine monitoring programme. Lead on simple routine surveys to provide good quality data and information to report on EU directives and UK commitments with the aim of protecting inland and coastal waters.

When necessary, help with incident response and investigation to deliver positive environmental outcomes.

Principal accountabilities

1. Provide accurate and timely support for operational decisions and environmental issues by carrying out analysis and interpretation of data and preparing reports from information and field investigations.
2. Contribute to investigations, identifying concerns and providing a first level technical response to the team / other functions, in line with Environment Agency policy, to help influence and support environmental outcomes.
3. Check compliance with environmental standards and service levels and undertake front line investigation e.g. inspection, monitoring, survey work, in order to carry out and support the business plan and environmental outcomes.
4. Interpret and implement basic scientific and technical procedures and principles in an integrated manner to assist in resolving problems.
5. Co-ordinate and chase responses to correspondence and enquiries, ensuring that internal and external information is effectively processed and tracked to ensure compliance with Environment Agency policy and procedure.
6. Develop and maintain a strong customer focus to ensure effective relationship building and partnership working to achieve environmental goals.



3. The role continued

7. Maintain and develop information storage and retrieval systems and ensure that information is up to date and readily accessible to facilitate departmental workflow.

8. Participate in the development of team work plans and undertake any agreed actions effectively, to contribute to business planning and delivery.

9. Support health & safety best practice by actively promoting awareness and ensuring the provision of safe working practices to comply with Environment Agency policies and standards.

10. Regularly update and maintain information on the relevant database(s) to ensure compliance with our own standards and procedures.

Knowledge/Qualifications

Trained to BSc level in a marine science related subject preferred.

Or, at least relevant vocational training in a science related discipline required

Skills/Abilities/Experience

- Experience of operational monitoring and ability to demonstrate a good track record of scientific practices and attention to detail
- Team working
- Data and information management
- Experience of working in the marine environment, ideally in coastal and estuarine survey work
- Knowledge of marine instrumentation, survey procedures data communication and safe working practices

Basic IT skills



4. Further information

The Environment Agency values a diverse workforce and welcomes applications from all sections of the community who wish to join a workforce which embraces difference and welcomes everyone.

We aim to create and maintain a diverse workforce (including our Board and Executives) that better reflects the UK's economically active population. Therefore, we particularly welcome applications from Black, Asian and Minority Ethnic (BAME), disabled, female and LGBT+ candidates who are under-represented across our workforce.

We will consider flexible working patterns for all our vacancies, including job share, so please include clearly any information regarding your preferred working arrangements on your application.

For further details please contact – Katie Arnold (Team Leader) on 07833048103, katie.arnold@environment-agency.gov.uk or Mike Fraser on 07899063013, mike.fraser@environment-agency.gov.uk

Eligibility to apply and continuity of employment

Employment agency workers and contractors are considered to be external candidates and should therefore only apply for positions that are being advertised externally. They are also not eligible to claim continuity of employment should they be successful in securing a position with the Environment Agency.

If you have been a member of a Regional Flood and Coastal Committee in the last 12 months we will not be able to continue with your application based on agreed appointment rules related to employing ex-RFCC members. We would welcome an application from you once the 12 month period have passed.

Please note that Environment Agency employees are not civil servants so you may wish to check your eligibility for continuity of employment by contacting your HR department. All eligible bodies are listed in the Redundancy Payments (Continuity of Employment in Local Government etc.) (Modification) Order 1999



4. Further information continued

Pre-employment Checks

We apply the Baseline Personnel Security Standard (BPSS) check when recruiting staff to our posts. This includes a basic criminal records check.

For the great majority of roles in the Environment Agency this will be sufficient and only certain roles will require a higher level of clearance. Should this be necessary, you will be advised of this during the recruitment process.

Positions based at our London office or roles that require frequent travel to London require CTC level security clearance. This will be confirmed to you during the recruitment process.

Want to find out more?

To find out more about what it's like to work at the Environment Agency, please visit:
<https://www.gov.uk/government/organisations/environment-agency/about/recruitment>





5. How to apply

We use an online recruitment system. To make the application process simple and straightforward, and so that you know how it works and what we need from you, we've put together a few hints and tips. Make sure you have all the information you need about the vacancy. For some jobs, you'll be asked to download a candidate pack, like this one, where you'll find specific application instructions.

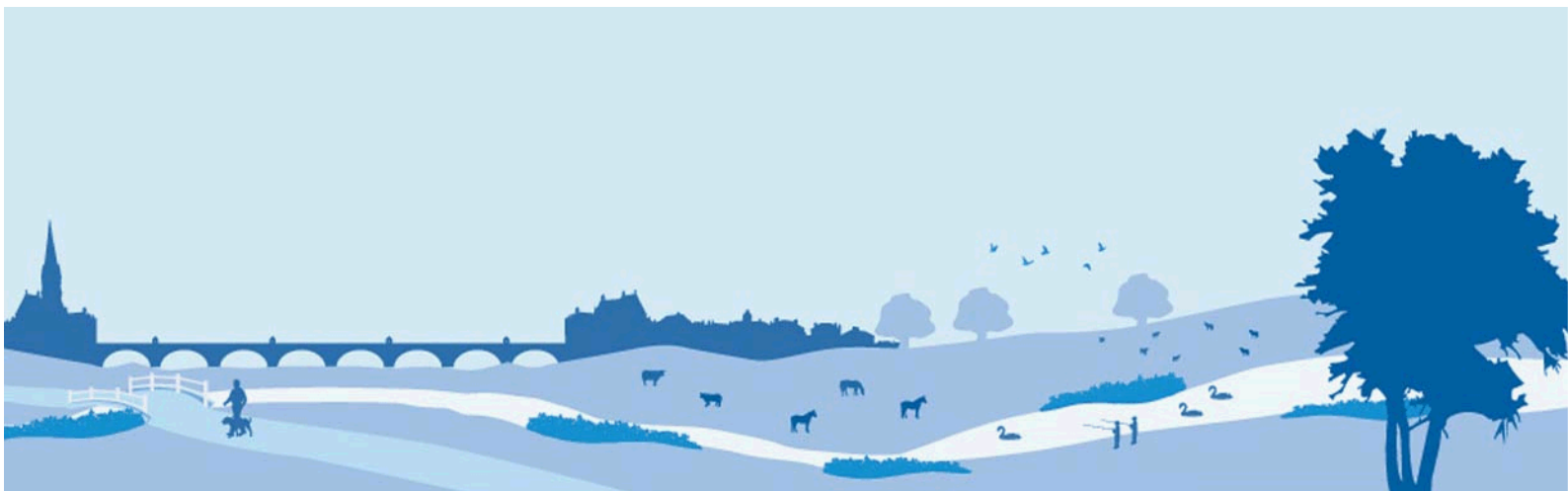
The first thing you need to do is sign up to our recruitment system. You will need a valid e-mail address to log in and apply for opportunities, as all communication from us will be via e-mail. You can do this via the vacancy you are interested in by selecting '**Apply**' at the bottom of the advert.

Once you've clicked this link you'll then be asked:

- Do you have the right to live and work in the UK?
- Do you have the required qualifications or equivalent experience, which were stated in the job advert?
- Are you currently an employee of this organisation?

Simply answer yes or no and you can carry on with your application. You'll then see the '**Register**' page. Simply complete the details and select '**Submit Registration**' and register to the system. You only need to sign up to the system once; you'll just be able to login next time.

When it comes to the actual application, you need to fill out each section, please be aware that the system will automatically time out if you are inactive for more than 60 minutes. This will result in any unsaved information being lost so make sure you save what you are doing regularly. Once you've finished, your details and information will be saved on the system for any future applications – of course, you can edit your details at any point.



5. How to apply continued

When you apply to the Environment Agency for a job we will ask you to provide your personal data on our application form. We need this information so that we can establish your identity and your right to work in the UK.

You can read our Data Protection Statement on the application process page of our recruitment system. It is also available for reference on each page of the actual application.

Competence Questions/Statement

We're keen to know what makes you right for the job you're applying for and why we should ask you in for an interview. The competence questions/statements are your chance to convince us!

You should demonstrate how your skills, qualities and experience meet the requirements of the job (as described in the job advert and candidate pack). And instead of simply telling us, show us: use real life examples of where you've used a certain skill or how you've practically applied your experience.

There's a 250 word limit per competence including spaces. It's a really important part of the selection process so make sure you keep your statement relevant and concise. Think about what we need to know about you and what you'd bring to the role and our organisation.

Application questions

For some roles, we'll ask you some specific questions, like if you have a preferred work location. If you're disabled and you'd like to be part of our Guaranteed Interview Scheme, you can add this information in here.



5. How to apply continued

Equality and Diversity

We're committed to reflecting the communities we serve and we'd like you to tell us about yourself and your background.

Submitting your application

Once you've filled out and completed everything, you'll be prompted to submit your application. Simply click the button and you're done.

Please be aware that once you've submitted your application, with the exception of the 'Personal Details' section you will not be able to edit your application further. If you decide to withdraw your application, you will not be able to submit another application for the same vacancy.

If, at any stage, you have questions or problems, please contact the recruitment team on 0845 602 6099 or email ea_recruitment@sscl.gse.gov.uk

Setting up 'job alerts'

If you have been unsuccessful with your application you can set up email alerts for future vacancies. You will automatically receive an email when a job that matches your criteria becomes available. To do this simply click on '**create a new job alert**', enter your job criteria and save.