

create a better place



Regulatory Services Industry Regulation Officer – Lincolnshire and Northamptonshire

Candidate Information Pack

Please consider the environment and only print this document if you really need to.

<http://www.gov.uk/environment-agency>



Job title: Regulatory Officer Installations – Lincolnshire and Northamptonshire
Job location: Lincoln
Date: 29 November 2018
Reference: 9560

Contents

1. Our organisation
2. Salary and benefits
3. The role
4. Further information
5. How to apply





1. Our organisation

Our organisation

We are the Environment Agency. We protect and improve the environment. Acting to reduce the impacts of a changing climate on people and wildlife is at the heart of everything we do. We reduce the risks to people, properties and businesses from flooding and coastal erosion. We protect and improve the quality of water, making sure there is enough for people, businesses, agriculture and the environment. Our work helps to ensure people can enjoy the water environment through angling and navigation. We look after land quality, promote sustainable land management and help protect and enhance wildlife habitats. And we work closely with businesses to help them comply with environmental regulations. We can't do this alone. We work with government, local councils, businesses, civil society groups and communities to make our environment a better place for people and wildlife.

Of course, none of this will be possible without the professionalism and dedication of our staff. We are committed to promoting equality and diversity in all we do, and to valuing the diversity of our workforce, customers and communities.

We're committed to helping our people to find new ways of working and to maintain our focus on creating a better place for people and wildlife. For more information on the Environment Agency and what we do, please visit:

www.environment-agency.gov.uk/aboutus

[Website](#) | [Twitter](#) | [Facebook](#) | [LinkedIn](#) | [Instagram](#) | [Flickr](#) | [YouTube](#)



2. Salary and benefits

Join us in this role and you will enjoy the following benefits:

Grade Rate: £34,330 - £42,530 (pro-rata - if part time)

Location: Lincoln

Hours of work: 37 hours - permanent contract

Leave entitlement: Your leave allowance in this role will be 25 days plus bank holidays (pro-rata - if part time or an assignment).

We also offer up to two days paid environmental outcome days each year. These give you the opportunity to take part in community activities with a clear environmental outcome for people and wildlife.

Pension: We will enrol you into the Environment Agency Pension Fund (EAPF) on commencing employment, if your employment contract is for 3 months or more. The EAPF is part of the Local Government Pension Scheme (LGPS). It is a career average scheme, which means you will build up benefits based on your pay each scheme year rather than your final salary.

We will base your pension contributions on your actual pay and you will receive tax and national insurance relief on your contributions. The pension contribution rates currently range between 5.5% to 12.5%. Whilst you are in the scheme we will also pay an employer contribution into your pension pot. We currently pay 18.5%, so this is a very generous scheme.

Work/life balance: We support flexible working hours and practices to help you strike a good balance between your work life and your personal life. We will also encourage you to keep developing your skills and professional knowledge throughout your career.



2. Salary and benefits continued

Diversity:

We are committed to diversity and inclusion. We aspire to be the best employer in the country for equality, diversity and inclusion (EDI) and want all our staff to feel valued and respected and to see this as a great place to work. From our EDI executive champions to our EDI employee networks, everyone has a part to play to embed equality, diversity and inclusion in our organisation. Diversity: it's in our nature.

Relocation:

If you need to relocate to take up this role, we might be able to offer financial help with this. This will depend on your circumstances, so if it's something you are interested in, please discuss it with us to find out what the options are.

Lease car:

The role qualifies for a lease car.

Tenancy deposit loan:

Our Tenancy deposit loan scheme assists permanent employees and individuals employed directly by the Environment Agency on a Fixed Term Contract of more than 3 months, to cover the costs of a deposit for a privately rented home, which can sometimes act as a barrier to moving.

The scheme gives access to an interest free loan to pay for some, or all of, a deposit and can be paid back over a period of up to 12 months (or by the end of your fixed term contract, if you are employed for less than 12 months), directly from your monthly salary.



3. The role

Role

Our advert describes the day to day activities of the role, the team it operates within and the skills/experience we're looking for from applicants. This information should be read in conjunction with the job family role profile that we've provided.

In the Environment Agency, our roles are grouped by grade and similar characteristics into one of seven job families. Job families describe the work undertaken in broad terms. This enables us to use generic profiles to broadly describe 80% of the key accountabilities, skills and experience for each job family at each grade.

The role of Regulatory Services Installations Officer –Lincolnshire and Northamptonshire fits into our Environment and Regulation job family at Grade 5.

Please contact the vacancy manager if you would like to discuss the role in more detail.

Job description

At the Environment Agency we are looking for experienced environmental professionals across Lincolnshire and Northamptonshire who will be responsible for the regulation of industry sites under the Environmental Permitting Regulations.

We regulate a wide range of industry including Onshore Oil and Gas, Food and Drink and Landfill but are particularly interested in candidates with process industry experience within the Combustion, Chemical or Refinery sectors.

There are a diverse range of environmental challenges across the sites we regulate. To meet these challenges we need to work effectively with the other regulatory teams in the area, with colleagues nationally and with professional partners.

The successful candidates will undertake a range of compliance assessment activities, including auditing at a wide range of industrial sites. You will ensure permit compliance and make complex assessments of operators' ability to protect the environment, prevent pollution and optimise use of resources.

You will use your influencing and negotiating skills to secure best practice, often dealing with people at senior levels within industry, local communities and other interested groups. The successful candidates will also respond to and investigate incidents making sure suitable preventative and protective action is implemented.

The Team

The post will be in the Installations North team covering sites in Lincolnshire and Northamptonshire. The area provides a diverse range of environmental challenges, stretching from the highly industrialised South Humber Bank, the urban centres of Peterborough, Northampton and Corby, and across the rural areas of Lincolnshire and Northamptonshire.

You will also have a key input to the Area, in supporting and advising other teams on industry sector regulation, compliance, advice and guidance.

Principal accountabilities

- Provide specialist advice and support to internal teams and external partners in order to influence compliance with policy / legislation / best practice ways of working and are in line with team business plans. This may involve working with or producing technical documentation and reports to support work and management decisions.
- Required to engage nationally within the organisation to understand best practice affecting their area of specialism and conversely sharing knowledge across the organisation.
- Responsible for building technical resilience of the team, and sometimes wider, within a specified area of knowledge through mentoring / training / guiding as appropriate
- Develop and maintain relationships, with internal and external stakeholders. Influencing and challenging with the objective of building resilience and promoting collaborative working. Roles may be required to work with colleagues across the Defra group to ensure services are delivered in the best way possible.
- May lead projects, usually to bring about effective change or improve regulatory and / or operational activities. May contribute to larger projects typically involving implementing of technical developments for the organisation or introducing new ways of working based on evidence.

Skills/Abilities/Experience

You will:

- have significant industrial experience and technical knowledge gained through regulatory, industry or consultancy roles
- be educated to degree level, preferably in a Scientific Discipline or equivalent and/or 5 years Process Industry or Regulatory Experience
- have knowledge of COMAH (desirable but not essential)
- be able to manage multiple demands on your time in a prioritised manner to achieve good outcomes and deliver against plans.
- demonstrate your practical operational experience and knowledge of environmental regulation.

- demonstrate experience of delivering environmental improvements using a range of tools.
- be proactive, self-motivated and a confident communicator, used to influencing and negotiating to deliver outcomes, with strong interpersonal skills.
- track record of taking the initiative and using a continuous improvement approach. Adapting readily to new ways of working.
- be flexible in your approach and have a “can do” attitude, and be able to make change happen



Competencies

Capability	
Scientific Knowledge	Applies scientific knowledge (various disciplines, depending on team role) to provide sound, science-based evidence to our internal and external customers.
Influences and persuades others	Presenting a case in a convincing and attractive way that will win people over, encouraging them to follow plans willingly; often succeeding where logic and reason alone would fail.
Communicates effectively	Listens and questions to understand and engage. Conveys information and ideas clearly, accurately and persuasively through speech and writing.
Achieves results	Sets and delivers high work standards, demonstrates the drive to meet targets. Prioritises and organises tasks and resources to ensure timely achievement of results



4. Further Information

The Environment Agency values a diverse workforce and welcomes applications from all sections of the community who wish to join a workforce which embraces difference and welcomes everyone.

We aim to create and maintain a diverse workforce (including our Board and Executives) that better reflects the UK's economically active population. Therefore, we particularly welcome applications from Black, Asian and Minority Ethnic (BAME), disabled, female and LGBT+ candidates who are under-represented across our workforce.

We will consider flexible working patterns for all our vacancies, including job share, so please include clearly any information regarding your preferred working arrangements on your application.

The role requires site visits and fieldwork and therefore a full driving licence is essential. Candidates may also be required to participate in an out of hours standby roster.

Eligibility to apply and continuity of employment

Employment agency workers and contractors are considered to be external candidates and should therefore only apply for positions that are being advertised externally. They are also not eligible to claim continuity of employment should they be successful in securing a position with the Environment Agency.

If you have been a member of a Regional Flood and Coastal Committee in the last 12 months we will not be able to continue with your application based on agreed appointment rules related to employing ex-RFCC members. We would welcome an application from you once the 12 month period have passed.

For applicants who currently work in local government or other bodies listed in the Redundancy Payments (Continuity of Employment in Local Government etc.) (Modification) Order 1999, you may be eligible for continuous service for the purpose of calculating any future redundancy payment. In addition, if you can demonstrate that you have worked at the Environment Agency immediately before joining the Civil Service and are now being re-employed by the Environment Agency within a period of three years of leaving, you may also count your Civil Service employment for the purpose of calculating your service related entitlements as outlined above. If you are unsure of your status then you should contact your own HR Team.



4. Further Information

Pre-employment Checks

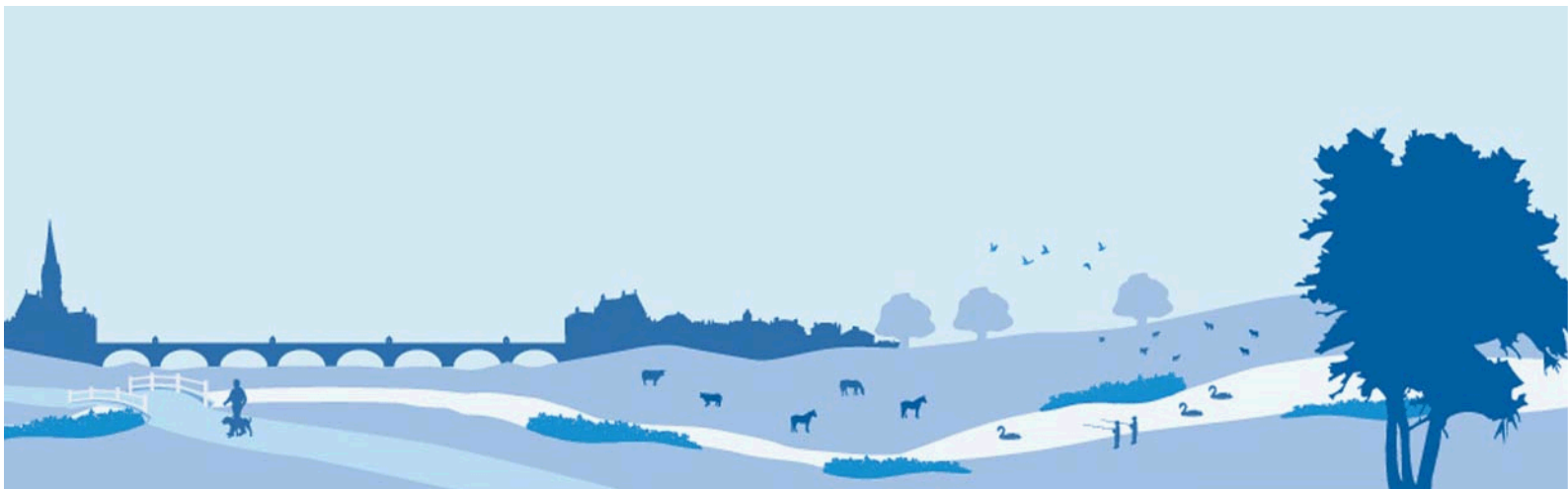
We apply the Baseline Personnel Security Standard (BPSS) check when recruiting staff to our posts. This includes a basic criminal records check.

For the great majority of roles in the Environment Agency this will be sufficient and only certain roles will require a higher level of clearance. Should this be necessary, you will be advised of this during the recruitment process.

Want to find out more?

To find out more about what it's like to work at the Environment Agency, please visit:
<https://www.gov.uk/government/organisations/environment-agency/about/recruitment>





5. How to apply

We use an online recruitment system. To make the application process simple and straightforward, and so that you know how it works and what we need from you, we've put together a few hints and tips. Make sure you have all the information you need about the vacancy. For some jobs, you'll be asked to download a candidate pack, like this one, where you'll find specific application instructions.

The first thing you need to do is sign up to our recruitment system. You will need a valid e-mail address to log in and apply for opportunities, as all communication from us will be via e-mail. You can do this via the vacancy you are interested in by selecting '**Apply**' at the bottom of the advert.

Once you've clicked this link you'll then be asked:

- Do you have the right to live and work in the UK?
- Do you have the required qualifications or equivalent experience, which were stated in the job advert?
- Are you currently an employee of this organisation?

Simply answer yes or no and you can carry on with your application. You'll then see the '**Register**' page. Simply complete the details and select '**Submit Registration**' and register to the system. You only need to sign up to the system once; you'll just be able to login next time.

When it comes to the actual application, you need to fill out each section, please be aware that the system will automatically time out if you are inactive for more than 60 minutes. This will result in any unsaved information being lost so make sure you save what you are doing regularly. Once you've finished, your details and information will be saved on the system for any future applications – of course, you can edit your details at any point.



5. How to apply continued

When you apply to the Environment Agency for a job we will ask you to provide your personal data on our application form. We need this information so that we can establish your identity and your right to work in the UK.

You can read our Data Protection Statement on the application process page of our recruitment system. It is also available for reference on each page of the actual application.

Competence Questions/Statement

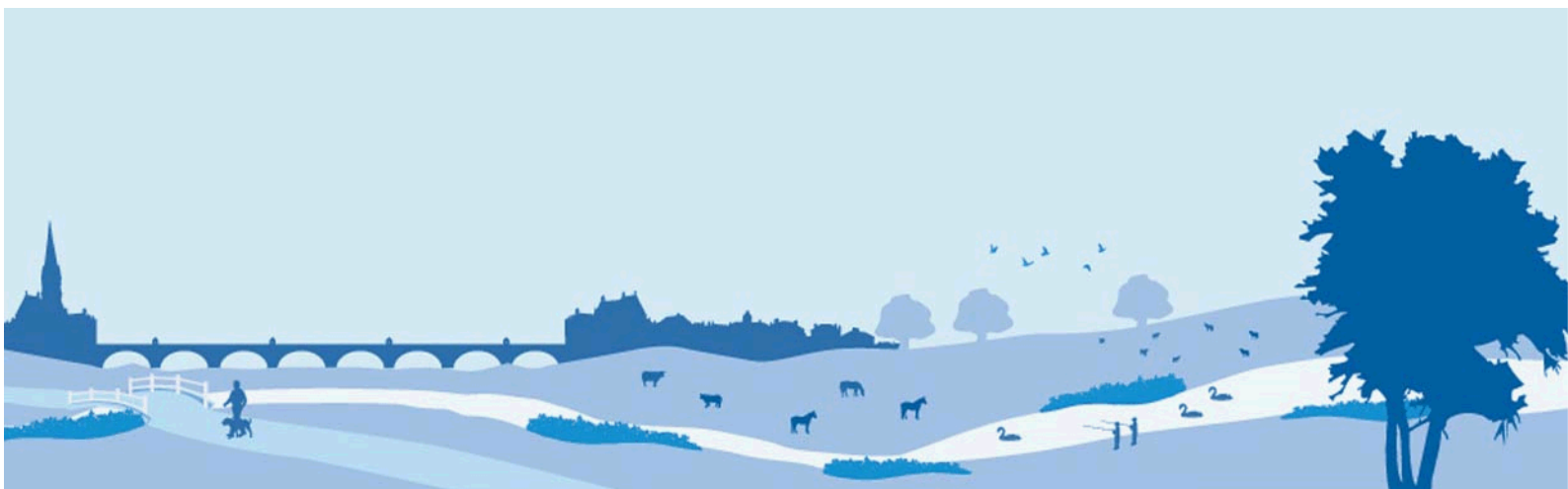
We're keen to know what makes you right for the job you're applying for and why we should ask you in for an interview. The competence questions/statements are your chance to convince us!

You should demonstrate how your skills, qualities and experience meet the requirements of the job (as described in the job advert and candidate pack). And instead of simply telling us, show us: use real life examples of where you've used a certain skill or how you've practically applied your experience.

There's a 250 word limit per competence including spaces. It's a really important part of the selection process so make sure you keep your statement relevant and concise. Think about what we need to know about you and what you'd bring to the role and our organisation.

Application questions

For some roles, we'll ask you some specific questions, like if you have a preferred work location. If you're disabled and you'd like to be part of our Guaranteed Interview Scheme, you can add this information in here.



5. How to apply continued

Equality and Diversity

We're committed to reflecting the communities we serve and we'd like you to tell us about yourself and your background.

Submitting your application

Once you've filled out and completed everything, you'll be prompted to submit your application. Simply click the button and you're done.

Please be aware that once you've submitted your application, with the exception of the 'Personal Details' section you will not be able to edit your application further. If you decide to withdraw your application, you will not be able to submit another application for the same vacancy.

If, at any stage, you have questions or problems, or you would like further details on the posts above, please contact Helen Renshaw, Team Leader – Installations North at helen.renshaw@environment-agency.gov.uk or telephone 020 302 54966

Setting up 'job alerts'

If you have been unsuccessful with your application you can set up email alerts for future vacancies. You will automatically receive an email when a job that matches your criteria becomes available. To do this simply click on '**create a new job alert**', enter your job criteria and save.