

create a better place



# Regulatory Inspector

## Candidate Information Pack



**Job title:** Regulatory Inspector  
**Job location:** Colchester  
**Date:** 7<sup>th</sup> March 2018  
**Reference:** 7755

# Contents

1. Our organisation
2. Salary and benefits
3. The role
4. Further information
5. How to apply





# 1. Our organisation

## Our organisation

We are the Environment Agency. We protect and improve the environment. Acting to reduce the impacts of a changing climate on people and wildlife is at the heart of everything we do. We reduce the risks to people, properties and businesses from flooding and coastal erosion. We protect and improve the quality of water, making sure there is enough for people, businesses, agriculture and the environment. Our work helps to ensure people can enjoy the water environment through angling and navigation. We look after land quality, promote sustainable land management and help protect and enhance wildlife habitats. And we work closely with businesses to help them comply with environmental regulations. We can't do this alone. We work with government, local councils, businesses, civil society groups and communities to make our environment a better place for people and wildlife.

Of course, none of this will be possible without the professionalism and dedication of our staff. We are committed to promoting equality and diversity in all we do, and to valuing the diversity of our workforce, customers and communities.

We're committed to helping our people to find new ways of working and to maintain our focus on creating a better place for people and wildlife. For more information on the Environment Agency and what we do, please visit:

[www.environment-agency.gov.uk/aboutus](http://www.environment-agency.gov.uk/aboutus)

[Website](#) | [Twitter](#) | [Facebook](#) | [LinkedIn](#) | [Instagram](#) | [Flickr](#) | [YouTube](#)



## 2. Salary and benefits

Join us in this role and you will enjoy the following benefits:

**Grade Rate:** £34,330

**Location:** Rivers House Kelvedon - Threshelfords Farmhouse, Inworth Road, Colchester CO5 9SE

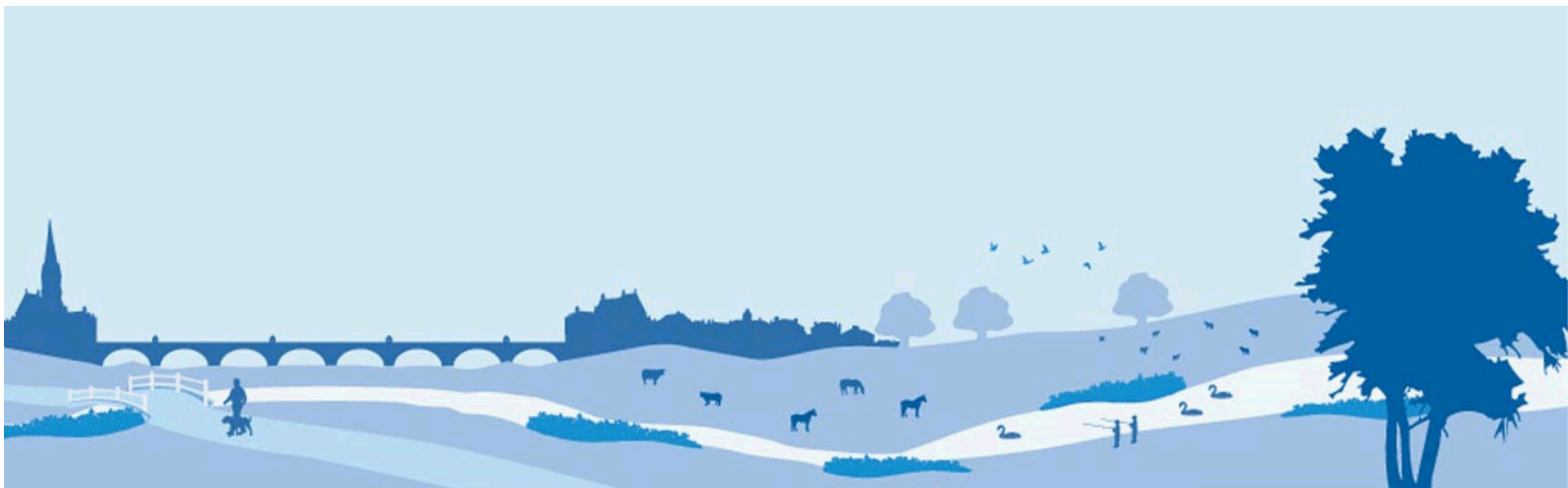
**Hours of work:** 37 hours FTE, Permanent contract

**Leave entitlement:** Your leave allowance in this role will be 27 days plus bank holidays (pro-rata - if part time or an assignment).

We offer up to two days paid environmental outcome days each year. These give you the opportunity to take part in community activities with a clear environmental outcome for people and wildlife.

**Pension:** We will enrol you into the Environment Agency Pension Fund (EAPF) on commencing employment, if your employment contract is for 3 months or more. The EAPF is part of the Local Government Pension Scheme (LGPS). It is a career average scheme, which means you will build up benefits based on your pay each scheme year rather than your final salary.

We will base your pension contributions on your actual pay and you will receive tax and national insurance relief on your contributions. The pension contribution rates currently range between 5.5% to 12.5%. Whilst you are in the scheme we will also pay an employer contribution into your pension pot. We currently pay 18.5%, so this is a very generous scheme.



## 2. Salary and benefits continued

### **Work/life balance:**

We support flexible working hours and practices to help you strike a good balance between your work life and your personal life. We will also encourage you to keep developing your skills and professional knowledge throughout your career.

### **Diversity:**

We are committed to diversity and inclusion. We aspire to be the best employer in the country for equality, diversity and inclusion (EDI) and want all our staff to feel valued and respected and to see this as a great place to work. From our EDI executive champions to our EDI employee networks, everyone has a part to play to embed equality, diversity and inclusion in our organisation. Diversity: it's in our nature.

### **Lease car:**

The role qualifies for a lease car.



## 3. The role

### Role

The role involves compliance assessment at a wide range of industrial facilities in order to ensure regulated sites are adhering to their Environmental Permits. This will include auditing environmental performance and making complex assessments of operators' ability to protect the environment, prevent pollution and optimise their use of resources. The role also involves responding to and investigating incidents.

### Principal accountabilities

1. To ensure that regulated sites comply with their permits and also drive improved environmental performance. Take any necessary enforcement action under the Environment Agency's policies and procedures.
2. Collect evidence and take appropriate actions for enforcement purposes to ensure compliance with legislation, permits and cost recovery as appropriate.
3. Contribute to the determination of applications by the National Permitting Service in accordance with relevant legislation and our policy and guidance to deliver environmental improvement.
4. Undertake effective incident response and participate in standby/call out rosters.
5. Provide technical support and advice to other teams and improve public and business awareness of best practice and environmental impacts.
6. Comply with Health and Safety requirements and have regard to the safety of others ensuring the provision of safe working practices and compliance with our standards.



## 3. The role continued

### **Knowledge/Qualifications**

You will need a broad range of technical knowledge together with knowledge of environmental regulation.

A degree in a relevant science discipline would be an advantage but is not essential.

### **Skills/Abilities/Experience**

- You will need to have significant regulatory and/or industrial experience including delivering environmental improvements through regulation.
- You will need to have strong interpersonal and team working skills.
- You will need to be proactive in your approach, self-motivated and a confident communicator both verbally and in writing.



## 4. Further information

The Environment Agency values a diverse workforce and welcomes applications from all sections of the community who wish to join a workforce which embraces difference and welcomes everyone.

We aim to create and maintain a diverse workforce (including our Board and Executives) that better reflects the UK's economically active population. Therefore, we particularly welcome applications from Black, Asian and Minority Ethnic (BAME), disabled, female and LGBT+ candidates who are under-represented across our workforce.

We will consider flexible working patterns for all our vacancies, including job share, so please include clearly any information regarding your preferred working arrangements on your application.

The role requires site visits and fieldwork and therefore a full driving licence is essential. Candidates will be required to participate in an out of hours standby roster. The role qualifies for a lease car.

For further details please contact Frank Saunders on 02030 258527.

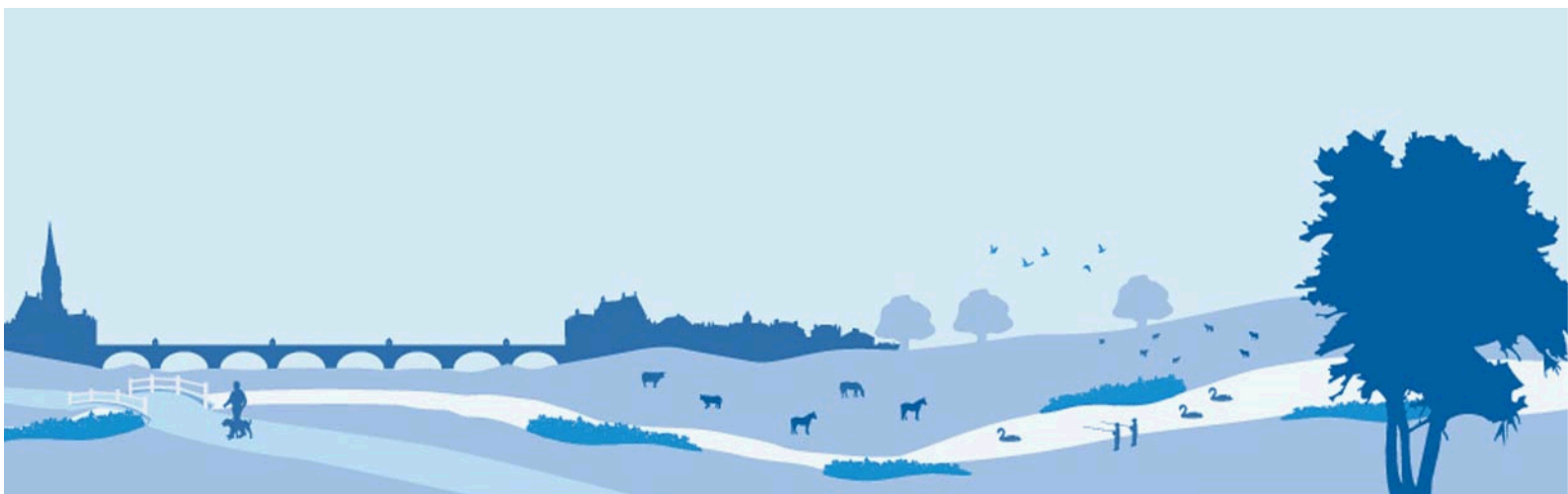
### **Eligibility to apply and continuity of employment**

Employment agency workers and contractors are considered to be external candidates and should therefore only apply for positions that are being advertised externally. They are also not eligible to claim continuity of employment should they be successful in securing a position with the Environment Agency.

If you have been a member of a Regional Flood and Coastal Committee in the last 12 months we will not be able to continue with your application based on agreed appointment rules related to employing ex-RFCC members. We would welcome an application from you once the 12 month period have passed.



Please note that Environment Agency employees are not civil servants so you may wish to check your eligibility for continuity of employment by contacting your HR department. All eligible bodies are listed in the Redundancy Payments (Continuity of Employment in Local Government etc) (Modification) Order 1999



## 4. Further information continued

### Pre-employment Checks

We apply the Baseline Personnel Security Standard (BPSS) check when recruiting staff to our posts. This includes a basic criminal records check.

For the great majority of roles in the Environment Agency this will be sufficient and only certain roles will require a higher level of clearance. Should this be necessary, you will be advised of this during the recruitment process.

Positions based at our London office or roles that require frequent travel to London require CTC level security clearance. This will be confirmed to you during the recruitment process.

### Want to find out more?

To find out more about what it's like to work at the Environment Agency, please visit:  
<https://www.gov.uk/government/organisations/environment-agency/about/recruitment>





## 5. How to apply

We use an online recruitment system. To make the application process simple and straightforward, and so that you know how it works and what we need from you, we've put together a few hints and tips. Make sure you have all the information you need about the vacancy. For some jobs, you'll be asked to download a candidate pack, like this one, where you'll find specific application instructions.

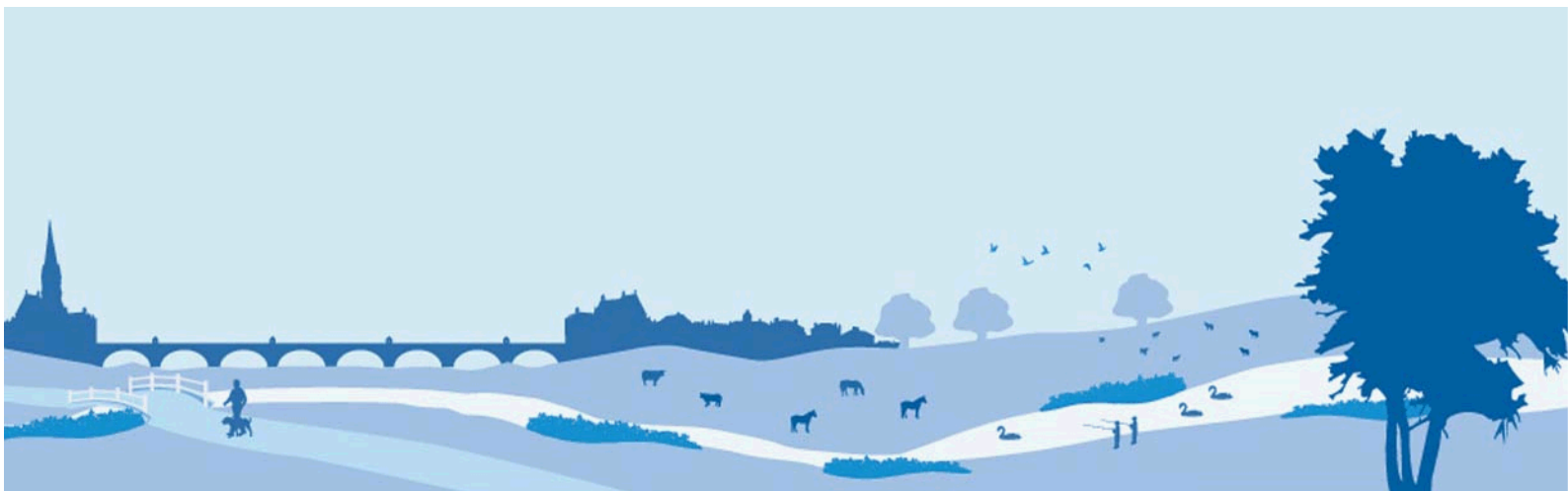
The first thing you need to do is sign up to our recruitment system. You will need a valid e-mail address to log in and apply for opportunities, as all communication from us will be via e-mail. You can do this via the vacancy you are interested in by selecting '**Apply**' at the bottom of the advert.

Once you've clicked this link you'll then be asked:

- Do you have the right to live and work in the UK?
- Do you have the required qualifications or equivalent experience, which were stated in the job advert?
- Are you currently an employee of this organisation?

Simply answer yes or no and you can carry on with your application. You'll then see the '**Register**' page. Simply complete the details and select '**Submit Registration**' and register to the system. You only need to sign up to the system once; you'll just be able to login next time.

When it comes to the actual application, you need to fill out each section, please be aware that the system will automatically time out if you are inactive for more than 60 minutes. This will result in any unsaved information being lost so make sure you save what you are doing regularly. Once you've finished, your details and information will be saved on the system for any future applications – of course, you can edit your details at any point.



## 5. How to apply continued

When you apply to the Environment Agency for a job we will ask you to provide your personal data on our application form. We need this information so that we can establish your identity and your right to work in the UK.

You can read our Data Protection Statement on the application process page of our recruitment system. It is also available for reference on each page of the actual application.

### **Competence Questions/Statement**

We're keen to know what makes you right for the job you're applying for and why we should ask you in for an interview. The competence questions/statements are your chance to convince us!

You should demonstrate how your skills, qualities and experience meet the requirements of the job (as described in the job advert and candidate pack). And instead of simply telling us, show us: use real life examples of where you've used a certain skill or how you've practically applied your experience.

There's a 250 word limit per competence including spaces. It's a really important part of the selection process so make sure you keep your statement relevant and concise. Think about what we need to know about you and what you'd bring to the role and our organisation.

### **Application questions**

For some roles, we'll ask you some specific questions, like if you have a preferred work location. If you're disabled and you'd like to be part of our Guaranteed Interview Scheme, you can add this information in here.



## 5. How to apply continued

### **Equality and Diversity**

We're committed to reflecting the communities we serve and we'd like you to tell us about yourself and your background.

### **Submitting your application**

Once you've filled out and completed everything, you'll be prompted to submit your application. Simply click the button and you're done.

Please be aware that once you've submitted your application, with the exception of the 'Personal Details' section you will not be able to edit your application further. If you decide to withdraw your application, you will not be able to submit another application for the same vacancy.

If, at any stage, you have questions or problems, please contact the recruitment team on 0845 602 6099 or email [ea\\_recruitment@sscl.gse.gov.uk](mailto:ea_recruitment@sscl.gse.gov.uk)

### **Setting up 'job alerts'**

If you have been unsuccessful with your application you can set up email alerts for future vacancies. You will automatically receive an email when a job that matches your criteria becomes available. To do this simply click on '**create a new job alert**', enter your job criteria and save.