

create a better place



Regulatory Officer – Waste Regimes Operational
Services (WROS) Grade 4 – Midlands
Vacancy No: 11891

Candidate Information Pack

Please consider the environment and only print this document if you really need to.

<http://www.gov.uk/environment-agency>

Jan 2019 – V2.0



Job title: Regulatory Officer – Waste Regimes Operational Services (WROS) Grade 4 - Midlands
Job location: Nottingham, Lincoln, Solihull and Fradley
Date: July 2019
Reference: 11891

Contents

1. Our organisation
2. Salary and benefits
3. The role
4. Further information
5. How to apply





1. Our organisation

We are the Environment Agency. We protect and improve the environment. Acting to reduce the impacts of a changing climate on people and wildlife is at the heart of everything we do. We reduce the risks to people, properties and businesses from flooding and coastal erosion. We protect and improve the quality of water, making sure there is enough for people, businesses, agriculture and the environment. Our work helps to ensure people can enjoy the water environment through angling and navigation. We look after land quality, promote sustainable land management and help protect and enhance wildlife habitats. And we work closely with businesses to help them comply with environmental regulations. We can't do this alone. We work with government, local councils, businesses, civil society groups and communities to make our environment a better place for people and wildlife.

Of course, none of this will be possible without the professionalism and dedication of our staff. We are committed to promoting equality and diversity in all we do, and to valuing the diversity of our workforce, customers and communities.

We're committed to helping our people to find new ways of working and to maintain our focus on creating a better place for people and wildlife. For more information on the Environment Agency and what we do, please visit:

www.environment-agency.gov.uk/aboutus



[Website](http://www.environment-agency.gov.uk) | [Twitter](#) | [Facebook](#) | [LinkedIn](#) | [Instagram](#) | [Flickr](#) | [YouTube](#)

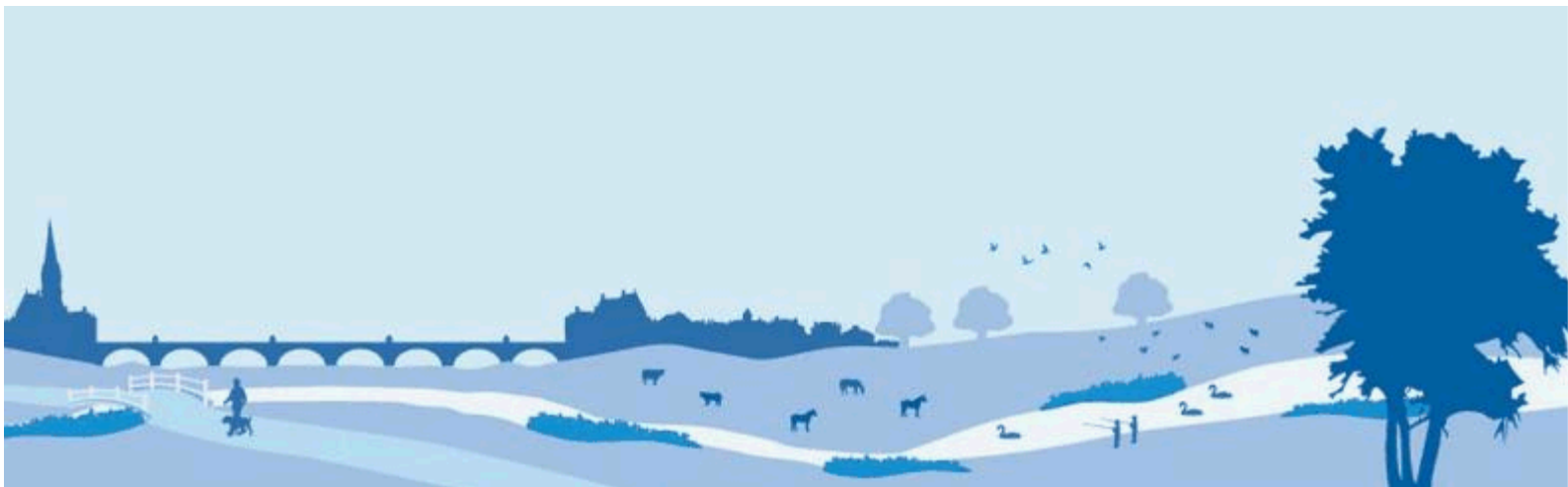
<http://www.gov.uk/environment-agency>



2. Salary and benefits

Join us in this role and you will enjoy the following benefits:

Grade Rate:	£27,138 (pro-rata - if part time)
Location:	This advert covers the following Environment Agency area offices, Nottingham, Lincoln, Solihull and Fradley.
Hours of work:	3 x 37 hours FTE, permanent contract 3 x 37 hours FTE, 12 month Fixed Term Contract
Leave entitlement:	<p>Your leave allowance in this role will be 27 days plus bank holidays (pro-rata - if part time or an assignment).</p> <p>We also offer up to two days paid environmental outcome days each year. These give you the opportunity to take part in community activities with a clear environmental outcome for people and wildlife.</p>
Pension:	<p>We will enrol you into the Environment Agency Pension Fund (EAPF) on commencing employment, if your employment contract is for 3 months or more. The EAPF is part of the Local Government Pension Scheme (LGPS). It is a career average scheme, which means you will build up benefits based on your pay each scheme year rather than your final salary.</p> <p>We will base your pension contributions on your actual pay and you will receive tax and national insurance relief on your contributions. The pension contribution rates currently range between 5.5% to 12.5%. Whilst you are in the scheme we will also pay an employer contribution into your pension pot. We currently pay 18.5%, so this is a very generous scheme.</p>



2. Salary and benefits continued

Work/life balance:

We support flexible working hours and practices to help you strike a good balance between your work life and your personal life. We will also encourage you to keep developing your skills and professional knowledge throughout your career.

Diversity:

We are committed to diversity and inclusion. We aspire to be the best employer in the country for equality, diversity and inclusion (EDI) and want all our staff to feel valued and respected and to see this as a great place to work. From our EDI executive champions to our EDI employee networks, everyone has a part to play to embed equality, diversity and inclusion in our organisation. Diversity: it's in our nature.

Relocation:

If you need to relocate to take up this role, we might be able to offer financial help with this. This will depend on your circumstances, so if it's something you are interested in, please discuss it with us to find out what the options are.





3. The role

The Environment Agency protect and improve the environment. Working to help ensure people enjoy the water environment through angling and navigation. We look after land quality, promote sustainable land management and help protect and enhance wildlife habitats. Working closely with businesses to help them comply with environmental regulations, at other times enforcing the law and making sure operators improve their performance.

The Environment Agency operate across England via 14 geographic Areas. This role will be based within one of our Pan Area Teams.

As a Regulatory Officer, you will play a critical frontline role protecting the environment helping create a cleaner, safer and healthier environment for people and wildlife. Dealing with a wide range of environmental issues from permitted and illegal waste sites to rivers, waterways and farms ensuring all activity happens without harm to people, wildlife or the environment.

The role is varied, vital and at times challenging. You'll be responsible for regulating a range of activities to ensure they are carried out without polluting the environment or causing harm to people. Sometimes having to take tough action to achieve these aims and occasionally need to investigate environmental offences





3. The role continued

Demonstration of the right behaviours is most important to us, we are looking for people who enjoy working both outdoors and in an office environment.

Training Opportunities

The successful candidate will have the opportunity to complete an Apprenticeship which is fully funded by the Environment Agency. This qualification leads to membership of the Chartered Management Institution. Candidates must not hold a previous similar qualification and must successfully complete the qualification in post.

To be eligible for an apprenticeship you:

- Must have the right to work in the UK and have been a UK resident for a minimum of three years.
- Must not hold or be working towards a similar apprenticeship or qualification at the same level or higher. (In order to be eligible, qualifications previously held or currently being worked towards must have been achieved in a different sector/subject in order to show that the apprenticeship would give you substantive new skills and personal progression).

Important: If you do not meet the above eligibility criteria we will not be able to consider your application and any offer of employment will be withdrawn or your contract will be terminated.





4. Further Information

The Environment Agency values a diverse workforce and welcomes applications from all sections of the community who wish to join a workforce which embraces difference and welcomes everyone.

We aim to create and maintain a diverse workforce (including our Board and Executives) that better reflects the UK's economically active population. Therefore, we particularly welcome applications from Black, Asian and Minority Ethnic (BAME), disabled, female and LGBT+ candidates who are under-represented across our workforce.

We will consider flexible working patterns for all our vacancies, including job share, so please include clearly any information regarding your preferred working arrangements on your application.

Eligibility to apply and continuity of employment

Employment agency workers and contractors are considered to be external candidates and should therefore only apply for positions that are being advertised externally. They are also not eligible to claim continuity of employment should they be successful in securing a position with the Environment Agency.

If you have been a member of a Regional Flood and Coastal Committee in the last 12 months we will not be able to continue with your application based on agreed appointment rules related to employing ex-RFCC members. We would welcome an application from you once the 12 month period have passed.

For applicants who currently work in local government or other bodies listed in the Redundancy Payments (Continuity of Employment in Local Government etc.) (Modification) Order 1999, you may be eligible for continuous service for the purpose of calculating any future redundancy payment. In addition, if you can demonstrate that you have worked at the Environment Agency immediately before joining the Civil Service and are now being re-employed by the Environment Agency within a period of three years of leaving, you may also count your Civil Service employment for the purpose of calculating your service related entitlements as outlined above. If you are unsure of your status then you should contact your own HR Team.



4. Further Information

Pre-employment Checks

We apply the Baseline Personnel Security Standard (BPSS) check when recruiting staff to our posts. This includes a basic criminal records check.

For the great majority of roles in the Environment Agency this will be sufficient and only certain roles will require a higher level of clearance. Should this be necessary, you will be advised of this during the recruitment process.

Positions based at our London office or roles that require frequent travel to London require CTC level security clearance. This will be confirmed to you during the recruitment process.

Want to find out more?

To find out more about what it's like to work at the Environment Agency, please visit:
<https://www.gov.uk/government/organisations/environment-agency/about/recruitment>



facebook

LinkedIn



YouTube



5. How to apply

We use an online recruitment system. To make the application process simple and straightforward, and so that you know how it works and what we need from you, we've put together a few hints and tips. Make sure you have all the information you need about the vacancy. For some jobs, you'll be asked to download a candidate pack, like this one, where you'll find specific application instructions.

The first thing you need to do is sign up to our recruitment system. You will need a valid e-mail address to log in and apply for opportunities, as all communication from us will be via e-mail. You can do this via the vacancy you are interested in by selecting '**Apply**' at the bottom of the advert.

Once you've clicked this link you'll then be asked:

- Do you have the right to live and work in the UK?
- Do you have the required qualifications or equivalent experience, which were stated in the job advert?
- Are you currently an employee of this organisation?

Simply answer yes or no and you can carry on with your application. You'll then see the '**Register**' page. Simply complete the details and select '**Submit Registration**' and register to the system. You only need to sign up to the system once; you'll just be able to login next time.

When it comes to the actual application, you need to fill out each section, please be aware that the system will automatically time out if you are inactive for more than 60 minutes. This will result in any unsaved information being lost so make sure you save what you are doing regularly. Once you've finished, your details and information will be saved on the system for any future applications – of course, you can edit your details at any point.



5. How to apply continued

When you apply to the Environment Agency for a job we will ask you to provide your personal data on our application form. We need this information so that we can establish your identity and your right to work in the UK.

You can read our Data Protection Statement on the application process page of our recruitment system. It is also available for reference on each page of the actual application.

Competence Questions/Statement

We're keen to know what makes you right for the job you're applying for and why we should ask you in for an interview. The competence questions/statements are your chance to convince us!

You should demonstrate how your skills, qualities and experience meet the requirements of the job (as described in the job advert and candidate pack). And instead of simply telling us, show us: use real life examples of where you've used a certain skill or how you've practically applied your experience.

There's a 250 word limit per competence including spaces. It's a really important part of the selection process so make sure you keep your statement relevant and concise. Think about what we need to know about you and what you'd bring to the role and our organisation.

Application questions

For some roles, we'll ask you some specific questions, like if you have a preferred work location. If you're disabled and you'd like to be part of our Guaranteed Interview Scheme, you can add this information in here.



5. How to apply continued

Equality and Diversity

We're committed to reflecting the communities we serve and we'd like you to tell us about yourself and your background.

Submitting your application

Once you've filled out and completed everything, you'll be prompted to submit your application. Simply click the button and you're done.

Please be aware that once you've submitted your application, with the exception of the 'Personal Details' section you will not be able to edit your application further. If you decide to withdraw your application, you will not be able to submit another application for the same vacancy.

If, at any stage, you have questions or problems, please contact the recruitment team on 0845 241 5350 or email ea_recruitment@sscl.gse.gov.uk

Setting up 'job alerts'

If you have been unsuccessful with your application you can set up email alerts for future vacancies. You will automatically receive an email when a job that matches your criteria becomes available. To do this simply click on '**create a new job alert**', enter your job criteria and save.

Environment Agency Benefits

The Environment Agency offers an attractive and competitive benefits package, including

<p>Core Benefits</p> <p>Basic Salary Based on skills and experience, in which salary ranges are subject to review each year as part of the pay award.</p> <p>Pension Scheme A final salary pension scheme. Contributions are based on your full time equivalent pay and range between 5.5% and 12.5%. The Environment Agency contribution is currently 18.5% of your pay.</p> <p>Holidays Attractive annual holiday entitlement starting at 25 days plus statutory bank holidays pro-rata for flexible workers , i.e. part time, job share employees).</p> <p>Enhanced statutory policies Enhanced maternity, adoption and paternity leave, and sickness absence provisions.</p>	<p>Training & Development</p> <p>Performance Management Individual performance plans, learning and development matched to your agreed career objectives and progression plans.</p> <p>Learning & Development A range of training courses, leadership development initiatives and access to L&D materials are available, covering technical, managerial and personal skills.</p> <p>Examination Leave Paid leave for exams and revision for approved studies.</p> <p>Professional subscriptions We will pay the membership fees for one relevant professional association.</p>	<p>Work/life Balance</p> <p>Flexible Working Flexible working patterns including job share.</p> <p>Family Friendly Benefits Childcare vouchers' scheme and discounts on selected childcare products.</p> <p>Travel & Transport Benefits A range of travel and transport benefits. Discounts on Haven Holidays and HotelStay.</p> <p>Shopping & Leisure Benefits A variety of discounts at online stores and leisure experiences available via Mylifestyle.</p>	<p>Health & Wellbeing</p> <p>Occupational Health Access to Duradiamond Healthcare advisory service.</p> <p>Eye Care Free eye tests.</p> <p>Employee Assistance Service Access to Workplace Wellness available to you and your family</p> <p>Sports & Social Club Opportunity to benefit from a wide range of subsidised events and discounts.</p> <p>Health Discounts Optional discounts provided by a number of external providers and health clubs.</p> <p>Local Benefits These vary from region to region.</p>	<p>Finance</p> <p>Interest Free Loans For season tickets and/or bicycles and safety equipment as well as tenancy deposit scheme</p> <p>Special Leave Additional paid leave is available for employees taking part in public duties, trade union activities, special/trained forces and for health & safety representatives.</p> <p><i>The following benefits only apply to eligible roles:</i></p> <p>Lease Car Scheme Free Car Parking</p>
---	---	---	---	--

Please consider the environment and only print this document if you really need to.

<http://www.gov.uk/environment-agency>